

# VALUE STREAM MAPPING

Lean technique for managing flow and improving processes. A visual tool allowing to track the process flow of materials or information, identifying areas of waste and improvement opportunities. It distinguishes value-adding and non-value-adding steps, and can help streamline processes with repeatable steps and minimize handoffs.

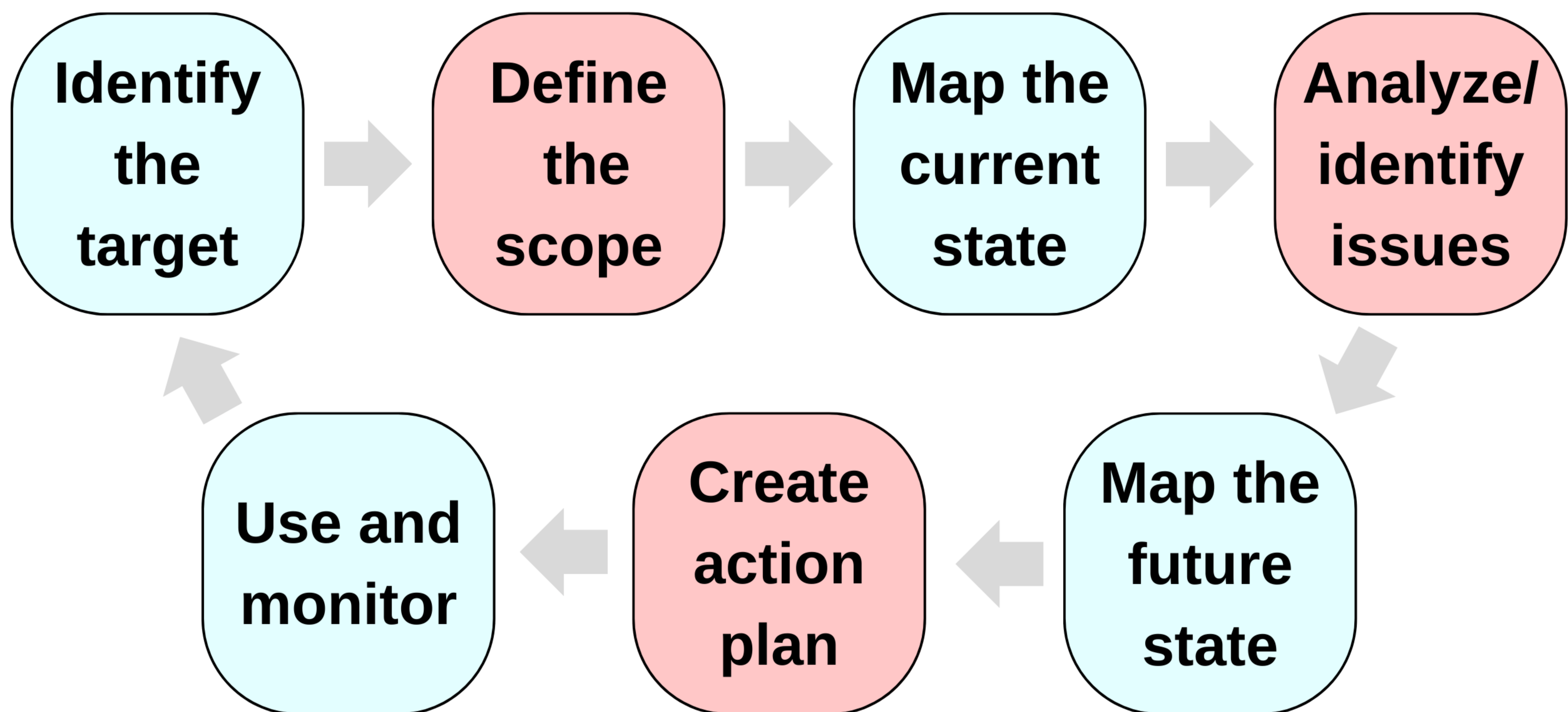
## WASTES

### LEAN MANUFACTURING

Overproduction, Inventory, Motion, Defects, Over-processing, Waiting, Transport

### SOFTWARE DEVELOPMENT

Partially completed work, Extra features, Relearning, Hand-offs, Delays, Task switching, Defects



### CURRENT STATE MAP

The Current State Map depicts the process at this very moment - the foundation for improvement initiatives by identifying areas to eliminate waste and enhance efficiency.

### FUTURE STATE MAP

The Future State Map illustrates the envisioned improvements to the process, aiming to enhance flow fluidity by eliminating identified waste and optimizing efficiency.